

Wynstan
BLINDS DOORS SHUTTERS AWNINGS



ROLLER SHUTTERS

WHY CHOOSE ROLLER SHUTTERS?

Roller Shutters are a fantastic addition to any home, offering enhanced security, weather protection, and energy efficiency. They act as a strong barrier against intruders, protect your windows from harsh elements, and help maintain a comfortable indoor temperature, reducing your energy bills. Additionally, they provide excellent noise reduction and allow for complete control over light and privacy. With a range of stylish options available, they not only boost your home's functionality but also add to its curb appeal.

SHUTTER TYPES



ENHANCED SECURITY



ENERGY SAVING



PRIVACY & LIGHT CONTROL



NOISE REDUCTION



WEATHER PROTECTION



LEARN MORE
ABOUT ROLLER
SHUTTERS



STANDARD ROLLER SHUTTERS:

These Roller Shutters feature aluminum slats with a foam-filled core, providing additional strength, superior insulation, and noise reduction. They are an ideal choice for customers looking for enhanced energy efficiency and comfort.



FIRE SHIELD SHUTTERS:

These Roller Shutters are made from high-grade aluminum with a fire-resistant design. They are tested to meet Bushfire Attack Level (BAL) 40 standards, enduring radiant heat up to 40kW/m² for 60 minutes without igniting. These Roller Shutters provide robust protection during bushfires and are available in various durable coatings for a stylish look.

CONTROL OPTIONS

Our standard roller shutters have two motorised options to choose from:

Rechargeable.

Rechargeable motors offer flexible charging, allowing you to optionally charge them indoors approximately every two weeks using our charge port or alternatively to our solar power unit, which can eliminate the need for regular charging.

Mains Power:

Fire Shield Shutters being a heavy-duty product require mains power motors.

Internal charging port to recharge Roller Shutter batteries.

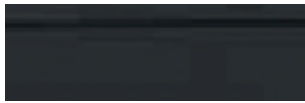


Operate the Roller Shutters with our Wynmotion remote or app on your mobile device.

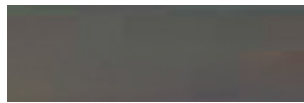
WYNMOTION

With 12 on-trend Australian exterior colours, you can choose a single shade for a sleek, modern look or mix and match to create a custom pattern. Both standard and Fire Shield Roller Shutters share the same versatile colour palette, allowing you to perfectly complement your home's exterior style.

COLOUR OPTIONS



Monument



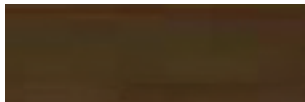
Woodland Grey



Deep Ocean Blue



Black



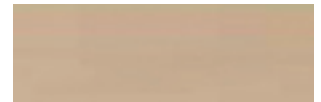
Brown*



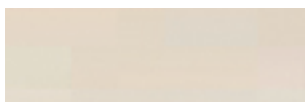
Green*



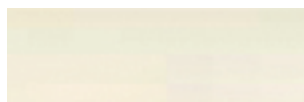
Red*



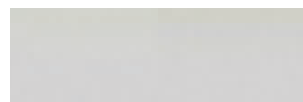
Beige*



Sand



Cream



Grey



White

*These colours are only available for Standard Roller Shutters.





As the Roller Shutter opens and closes, you'll notice perforated light filtering through the Shutter slats. Once fully closed, the slats interlock tightly, creating an effective barrier against light and temperature.

*standard shutter with perforated holes shown.



The slats slide within wall-mounted channels, providing additional stability, minimising light gaps, and improving energy efficiency.

When opened, all slats roll up neatly into the headbox, maintaining a streamlined appearance.

Optional final slat locks into a bottom recess, ensuring a snug fit and preventing wind from causing any rattling noises.



TRUSTED AUSTRALIAN QUALITY WITH ENERGY EFFICIENCY RATINGS:

Our Roller Shutters are manufactured by Ozroll. Same as Wynstan, Ozroll is an Australian company known for its high-quality, reliable products.

Wynstan Roller Shutters are highly rated under the WincovER system because they are designed to improve energy efficiency by controlling heat and light transfer through windows.

The WincovER rating system uses a 10-star scale to measure both heating and cooling performance, making it easy for consumers to compare the energy-saving capabilities of different window coverings. Our Roller Shutters have a certificate U-Value of 3.51 and a Solar Head Gain of 0.045.

Consumers who purchased Roller Shutters have been scientifically proven to save energy, with an average:



13% reduction in heating energy use



54% reduction in cooling energy usage

